

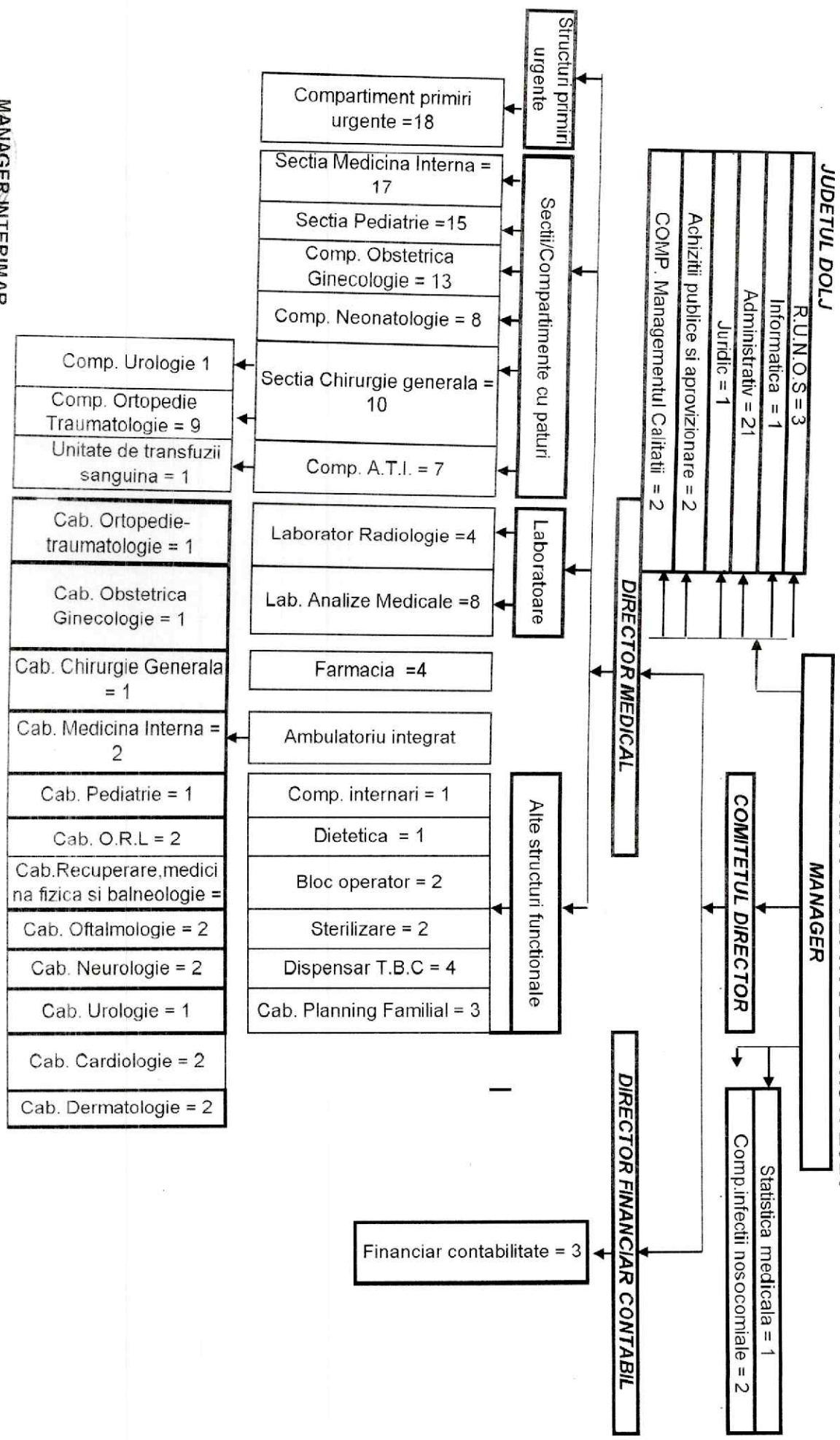
PRIMĂRIA ORĂȘULUI SEGARCEA
 ÎNTRĂRIRE Nr. 759
 29.01.2025
 A. 2025

SPITALUL ORĂȘENESC
 SEGARCEA
 JUDEȚUL DOLOJ

Spitalul Orasenesc Segarcea
 JUDEȚUL DOLOJ

ORGANIGRAMA LA DATA DE 01.01. 2025

Nr. 308 din 29.01.2025



MANAGER INTERIMAR
 Dr. OPRIȚOIU IOANA
 SPITALUL ORĂȘENESC
 SEGARCEA
 Nr. contract 204

DIRECTOR FINANCIAR CONTABIL,

BIROU R.U.N.O.S.,

IARIA ORĂȘULUI SEGARCEA
 TARE Nr. 759
 29 Luna 01 An 2029

SPITALUL ORĂȘENESC
 SEGARCEA
 JUDEȚUL DOLJ

Nr. 309 din 29.01.2025

Tel : 0251/210423, Fax : 0251/210900						
E-mail: sosegarcea@gmail.com						
CATEGORIA UNITATII IV						
Nr. paturi = 112						
STAT DE FUNCTII						
Nr. Crt.	FUNCTIA, GRADUL SAU TREAPTA	Grad Treapta	SPECIALITATEA	NIVEL STUDII	Gradatia /Nivel	Observatii
0	1		2	3	5	11
PERSONAL DE CONDUCERE						
1	MANAGER		Medicala	S	II	decizie per.det
2	DIRECTOR MEDICAL		Medicala	S	II	decizie per.det
3	DIRECTOR FINANCIAR CONTABIL		Economist	S	II	
TOTAL						
SURSA DE FINANTARE: FONDUL DE ASIGURARI SOCIALE						
STATISTICA MEDICALA						
4	Statistician			M	2	
TOTAL						
COMPARTIMENT INFECTII NOSOCOMIALE						
5	Medic primar		epidemiologie	S	2	Vacant
6	Asistent medical pr.		igiiena	PL	5	
TOTAL						
STRUCTURI PRIMIRI URGENTE						
COMPARTIMENT PRIMIRI URGENTE						
Personal medical						
7	Medic specialist		Urgenta	S	3	
8	Medic specialist		Urgenta	S	2	Vacant
9	Medic specialist		Urgenta	S	2	Vacant
Personal mediu sanitar						
10	Asistent medical pr.		Generalist	PL	2	
11	Asistent medical pr.		Generalist	PL	5	
12	Asistent medical pr.		Generalist	PL	4	
13	Asistent medical pr.		Generalist	PL	4	
14	Asistent medical pr.coord sef cu delegatie		Generalist	PL	4	5 % gestiune
15	Asistent medical pr.		Generalist	PL	4	
16	Asistent medical pr.		Generalist	PL	1	
Personal auxiliar						
17	Registrator medical			M	2	
18	Infirmiera			M	4	
19	Infirmiera			M	5	
20	Infirmiera			M	5	
21	Ingrjitoare			G	4	
22	Ingrjitoare			M	5	



Nr. Cr.	FUNCTIA, GRADUL SAU TREAPTA	Grad	SPECIALITATEA	NIVEL STUDII	Gradatia /Nivel	Observatii
		Treapta				
0	1		2	3	5	11
23	Brancardier			M	4	
24	Brancardier			M	4	
25	Brancardier			M	5	
TOTAL						
SECTIA MEDICINA INTERNA						
Nr.paturi 30						
Personal medical						
26	Medic primarsef. sectie cu delegatie		Medicina interna	S	5	
27	Medic specialist		Medicina interna	S	5	
28	Medic specialist		Medicina interna	S	3	Vacant
29	Medic rezident an II		medicina interna	S	5	
Personal mediu sanitar						
30	Asistent.medical pr.		Generalist	PL	2	
31	Asistent.medical pr.sefa sec. cu deleg		Generalist	PL	3	
32	Asistent.medical pr.		Generalist	PL	5	
33	Asistent medical pr.		Generalist	PL	4	
34	Asistent.medical pr.		Generalist	PL	5	
35	Asistent medical pr.		Generalist	PL	4	
36	Asistent medical pr.		Generalist	PL	2	Vacant
Personal auxiliar						
37	Infirmiera			G	5	
38	Infirmiera			G	5	
39	Infirmiera			G	5	
40	Infirmiera			M	3	
41	Infirmiera			G	5	
42	Ingrijitoare			G	4	Vacant
TOTAL						
SECTIA PEDIATRIE						
Nr.paturi = 25						
Personal medical						
43	Medic primar sef sectie cu delegatie		Pediatric	S	5	
44	Medic spec.		Pediatric	S	2	Vacant
45	Medic primar		Pediatric	S	5	temporar - vacant
Personal mediu sanitar						



Nr. Crt.	FUNCTIA, GRADUL SAU TREAPTA	Grad	SPECIALITATEA	NIVEL STUDII	Gradatia /Nivel	Observatii
		Treapta				
0	1		2	3	5	11
46	Asistent medical pr.		Generalist	PL	3	
47	Asistent medical pr.		Generalist	PL	3	Vacant
48	Asistent medical pr.		Generalist	PL	3	
49	Asistent medical pr.		Pediatric	PL	5	
50	Asistent medical pr.		Generalist	PL	4	
51	Asistent medical pr. sefa sec.deleg		Generalist	PL	4	
Personal auxiliar						
52	Infirmiera			M	5	
53	Infirmiera			G	5	
54	Infirmiera			G	5	
55	Infirmiera			M	3	
56	Infirmiera			M	3	
57	Ingrijitoare			G	5	
TOTAL						
COMPARTIMENT OBSTETRICA-GINECOLOGIE						
Nr.paturi = 20						
Personal medical						
58	Medic primar		Obstetrica-ginec.	S	5	
59	Medic specialist		Obstetrica-ginec.	S	2	Vacant
60	Medic specialist		Obstetrica-ginec.	S	2	Ambulatoriul integrat Vacant
Personal mediu sanitar						
61	Moasa pr.		Obstetrica-ginec.	S	4	
62	Moasa pr.		Obstetrica-ginec.	S	5	
63	Moasa pr.		Obstetrica-ginec.	S	2	
64	Moasa pr.		Obstetrica-ginec.	S	5	Vacant
65	Moasa pr.		Obstetrica-ginec.	S	5	
66	Asistent medical pr.coord. Sef cu delegatie		Generalist	PL	4	5 % gestiune
Personal auxiliar						
67	Infirmiera			M	5	
68	Infirmiera			G	5	
69	Infirmiera			M	3	
70	Ingrijitoare			M	4	
TOTAL						
COMPARTIMENT NEONATOLOGIE						
Nr.paturi = 5						
Personal medical						
71	Medic spec.		Neonatologie	S	2	Vacant
Personal mediu sanitar						
72	Asistent medical pr.		Pediatric	PL	5	
73	Asistent medical pr.coord. Sef		Pediatric	PL	5	5% gestiune
74	Asistent medical pr.		Generalist	PL	5	
75	Asistent medical pr.		Generalist	PL	5	
76	Asistent medical pr.		Generalist	PL	5	
Personal auxiliar						
77	Infirmiera			M	5	Vacant
78	Ingrijitoare			G	5	
TOTAL						
SECTIA CHIRURGIE GENERALA 27 paturi DIN CARE						
COMPARTIMENT UROLOGIE						
Nr. paturi =5						
79	Medic Specialist		Urologie	S		2 Ambulatoriul integrat
Compartment chirurgie						
Nr. paturi = 7						
Personal medical						
80	Medic primar		Chirurgie generala	S	4	
81	Medic primar		Chirurgie generala	S	5	Ambulatoriul integrat
COMPARTIMENT ORTOPEDIE TRAUMATOLOGIE						
Nr.paturi = 15						
Personal medical						
82	Medic primar		Ortopedie-traum	S	5	
83	Medic primar		Ortopedie-traum	S	4	
Personal mediu sanitar						
84	Asistent medical pr.		Generalist	PL	3	5% gestiune
85	Asistent medical pr.		Generalist	PL	3	



Nr. Crt.	FUNCTIA, GRADUL SAU TREAPTA	Grad	SPECIALITATEA	NIVEL STUDII	Gradatia /Nivel	Observatii
		Treapta				
0	1		2	3	5	11
86	Asistent medical pr.		Generalist	PL	2	
87	Asistent medical pr.		Generalist	PL	3	
88	Asistent medical pr.		Generalist	PL	5	
89	Asistent medical pr.		Generalist	PL	2	
90	Asistent medical pr.		Generalist	PL	2	
91	Asistent medical pr.coord sef cu delegatie		Generalist	PL	5	
	Personal auxiliar					



Nr. Cr.	FUNCTIA, GRADUL SAU TREAPTA	Grad	SPECIALITATEA	NIVEL STUDII	Gradatia /Nivel	Observatii
		Treapta				
0	1		2	3	5	11
92	Infirmiera			M	4	
93	Ingrijitoare			M	3	
94	Ingrijitoare			M	B	
95	Infirmiera			G	5	
96	Infirmiera			G	3	
97	Infirmiera					
98	Infirmiera			G	2	
	TOTAL					
	COMPARTIMENT. A.T.I.					
	Nr.paturi = 5					
	Personal medical					
99	Medic primar		A.T.I	S	4	
100	Medic specialist		A.T.I	S	2	Vacant
	Personal mediu sanitar					
101	Asistent medical pr.coord.sef cu delegatie		Generalist	PL	4	



Nr. Cr.	FUNCTIA, GRADUL SAU TREAPTA	Grad	SPECIALITATEA	NIVEL STUDII	Gradatia /Nivel	Observatii
		Treapta				
0	1		2	3	5	11
102	Asistent medical pr.		Generalist	PL	5	
103	Asistent medical pr.		Generalist	PL	4	temporar vacant CCC
104	Asistent medical pr.		Generalist	PL	4	
	Personal auxiliar					
105	Infirmiera			G	4	
	TOTAL					
	UNITATE DE TRANSFUZII SANGUINA					
	Personal mediu sanitar					
106	Asistent medical pr.		Generalist	PL	5	
	TOTAL					
	LABORATOR RADIOLOGIE					
	Serviciul unic pentru spital si ambulatoriul de specialitate					
	Personal medical					
107	Medic primar		Radiologie	S	3	
	Personal mediu sanitar					
108	Asistent medical pr.		Radiologie	PL	3	
109	Asistent medical pr.		Radiologie	PL	2	
110	Asistent medical		Radiologie	PL	2	Vacant
	TOTAL					
	LABORATOR ANALIZE MEDICALE					
	Serviciul unic pentru spital si ambulatoriul de specialitate					
	Personal medical					
111	Medic primar		Laborator	S	2	Vacant
112	Medic specialist		Laborator	S	2	Vacant
113	Biochimist principal		Biochimist	S	5	
114	Biolog principal		Biolog	S	5	Vacant
	Personal mediu sanitar					
115	Asistent medical pr.		Generalist	PL	1	5% gestiune
116	Asistent medical pr.		Laborator	SSD	4	
117	Asistent medical pr.		Laborator	PL	4	Vacant
118	Asistent medical pr.		Laborator	PL	5	
	TOTAL					
	FARMACIE CU CIRCUIT INCHIS					
	Personal medical					
119	Farmacist primar sef.cu deleg.		Farmacie	S	4	5% gestiune



Nr. Crt.	FUNCTIA, GRADUL SAU TREAPTA	Grad	SPECIALITATEA	NIVEL STUDII	Gradatia /Nivel	Observatii
		Treapta				
0	1		2	3	5	11
	Personal mediu sanitar					
120	Asistent medical pr.		Farmacie	PL	4	5% gestiune
121	Asistent medical pr.		Farmacie	PL	3	5 % gestiune
	Personal auxiliar					
122	Ingrijitoare			G	5	
	TOTAL					
	ALTE STRUCTURI FUNCTIONALE					
	ACTIVITATI COMUNE PE SPITAL					
	Dietetica					
123	Asistent medical pr.		Dietetica	PL	5	5% gestiune
	BLOC OPERATOR					
124	Asistent medical pr.		Generalist	PL	5	
125	Asistent medical pr.		Generalist	S	2	
	STERILIZARE					
126	Asistent medical pr.		Generalist	PL	3	
127	Asistent medical pr.		Generalist	PL	2	Vacant
	Birou Internari					
128	Registrator medical pr.			M	5	
	TOTAL					
	AMBULATORIUL INTEGRAT					
	Numar populatie: 44.897					
	Cabinet Ortopedie-traumatologie - integrat cu corespondent in Comp.ortopedie traumatologie					
	Personal mediu sanitar					
129	Asistent med pr.		Generalist	PL	3	
	Cabinet Obstetrica-Ginecologie - integrat cu corespondent in Comp.obstetrica ginecologie					
	Personal mediu sanitar					
130	Asistent med pr		Generalist	PL	4	
	Cabinet Chirurgie generala - integrat cu corespondent in Comp.chirurgie ge					
	Personal mediu sanitar					
131	Asistent medical pr.		Generalist	PL	2	



Nr. Crt.	FUNCTIA, GRADUL SAU TREAPTA	Grad	SPECIALITATEA	NIVEL STUDII	Gradatia /Nivel	Observatii
		Treapta				
0	1		2	3	5	11
Cabinet Medicina-Interna - Integrat cu corespondent in Sectia medicina Interna						
	Personal mediu sanitar					
132	Asistent med.		Generalist	PL	2	
	Personal auxiliar					
Cabinet Pediatrie- integrat cu corespondent in Sectia pediatrie						
	Personal mediu sanitar					
133	Asistent med. Pr.		Generalist	PL	3	
Cabinet O.R.L. - integrat fara corespondent						
	Personal medical					
134	Medic specialist		O.R.L.	S	4	
	Personal mediu sanitar					
135	Asistent med. Pr		Generalist	PL	4	
Cabinet recuperare, medicina fizica si balneologie - integrat fara corespondent						
	Personal medical					
136	Medic primar		B.F.T.	S	5	
	Personal mediu sanitar					
137	Asistent med.		BFT	S	1	
Cabinet Oftalmologie - Integrat fara corespondent in compartimentul de Oftalmolo						
	Personal medical					
138	Medic spec.		Oftalmologie	S	2	
	Personal mediu sanitar					
139	Asistent medical		Generalist	PL	4	
Cabinet Neurologie - integrat fara corespondent						
	Personal medical					
140	Medic primar		Neurologie	S	3	
	Personal mediu sanitar					
141	Asistent medical		Generalist	PL	1	Vacant
Cabinet Urologie - integrat cu corespondent spital						
	Personal medical					
	Personal mediu sanitar					
142	Asistent medical		Generalist	PL	1	Vacant
Cabinet Cardiologie - Integrat fara corespondent						
	Personal medical					
143	Medic specialist		Cardiologie	S	2	temporar vacant CFP
	Personal mediu sanitar					
144	Asistent medical		Generalist	PL	B	Vacant
Cabinet Dermatovenerologie - integrat fara corespondent						
	Personal medical					
145	Medic specialist		Dermatovenerologie	S	1	
	Personal mediu sanitar					
146	Asistent medical		Generalist	S	B	Vacant
	TOTAL					



Nr. Crt.	FUNCTIA, GRADUL SAU TREAPTA	Grad	SPECIALITATEA	NIVEL STUDII	Gradatia /Nivel	Observatii
		Treapta				
0	1		2	3	5	11
Birou R.U.N.O.S.						
147	Referent specialitate I		Economic	S	4	
148	Referent I			M	3	
149	Referent I			M	4	
	TOTAL					
Birou financiar-contabil						
150	Economist IA		Economic	S	5	
151	Economist I		Economic	S	2	
152	Economist I A		Economic	S	5	
	TOTAL					
Compartiment achizitii publice, aprovizionare, transport						
153	Referent Specialitate I A		Economie	S	4	
154	Lucrator comercial		Lucrator comercial	M	5	
	TOTAL					
Birou de Management al Calitatii						
155	Medic Primar		Medic primar	S	5	Vacant
156	Referent specialitate		Economic	S	2	
	TOTAL					
Birou Juridic						
157	Consilier juridic		Jurist	S	2	Vacant
	TOTAL					
Birou informatica						
158	Analist programator – ajutor	I		M	2	
	TOTAL					
SECTOR ADMINISTRATIV						
159	Secretar			M	2	
160	Magaziner I			M	3	
161	Ingrititoare			M	1	VACANT
	TOTAL					
Personi auxiliare						
162	Paznic			M	4	
163	Paznic			M	5	
164	Paznic			M	4	Vacant
	TOTAL					
Spalatorie						
165	Spalatoreasa			G	3	
166	Spalatoreasa			G	3	
	TOTAL					



Nr. Cr.	FUNCTIA, GRADUL SAU TREAPTA	Grad	SPECIALITATEA	NIVEL STUDII	Gradatia /Nivel	Observatii
		Treapta				
0	1		2	3	5	11
FORMATIA DE INTRET. CLADIRI, INST. DE APA, LUMINA, INCALZIRE						
167	Muncitor IV		centrala termica	G	4	
168	Muncitor I		electrician	M	5	Vacant
169	Muncitor IV		lăcătuș mecanic	G	5	Vacant
170	Muncitor IV		lăcătuș mecanic	G	4	
171	Muncitor I		instalator sanitar	M	5	Vacant
172	Muncitor I		zidar	G	5	
	TOTAL					
Deservire posturi fixe						
173	Muncitor I		lenjer	G	5	
174	Sofer I		sofer	G	5	Vacant
175	Muncitor IV		telefonist	M	5	
176	Muncitor IV		telefonist	M	5	
	TOTAL					
BLOC ALIMENTAR						
177	Muncitor I		bucatar	M	5	
178	Muncitor I		bucatar	G	4	
179	Muncitor I		bucatar	G	5	
	TOTAL					
TOTAL FOND ASIGURARI SOCIALE						
	TOTAL - 179					
MANAGER, Dr: Opritoiu Ioana			Director.Fin Contabil Ec Jianu Adina		Comp: Runos Ec: Ciuca Claudia	



Nr. Cr.	FUNCTIA, GRADUL SAU TREAPTA	Grad	SPECIALITATEA	NIVEL STUDII	Gradatia /Nivel	Observatii
		Treapta				
0	1		2	3	5	11
SURSA DE FINANTARE: BUGET DE STAT						
DISPENSAR T.B.C.						
Personal medical						
180	Medic primar		Pneumologie	S	5	
Personal mediu sanitar						
181	Asistent medical pr.		Generalist	PL	5	
182	Asistent medical pr.		Generalist	S	4	
Personal auxiliar						
183	Ingrjitoare			M	5	
TOTAL						
CABINET PLANING FAMILIAL						
Personal medical						
184	Medic specialist		Medicina familie	S	5	
185	Medic primar		Medicina familie	S	5	
Personal mediu sanitar						
186	Asistent medical pr.		Generalist	PL	3	
TOTAL						
TOTAL BUGET DE STAT						
TOTAL POSTURI : 7						
TOTAL GENERAL 186						
MANAGER, Dr: Opritoiu Ioana			Director.Fin Contabil Ec Jianu Adina		Comp: Runos Ec: Ciuca Claudia	

